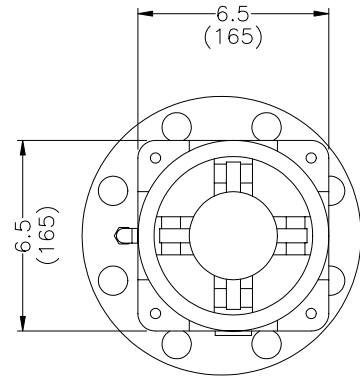
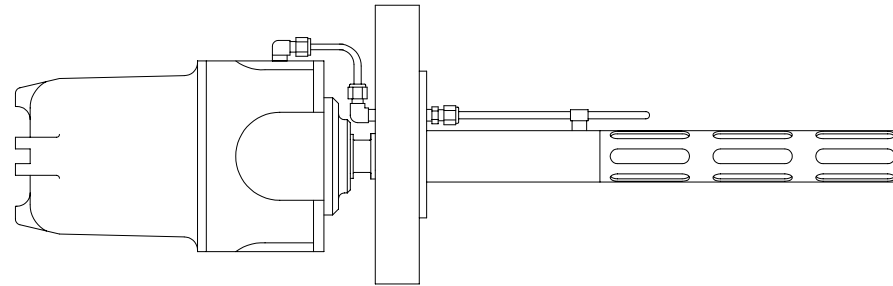


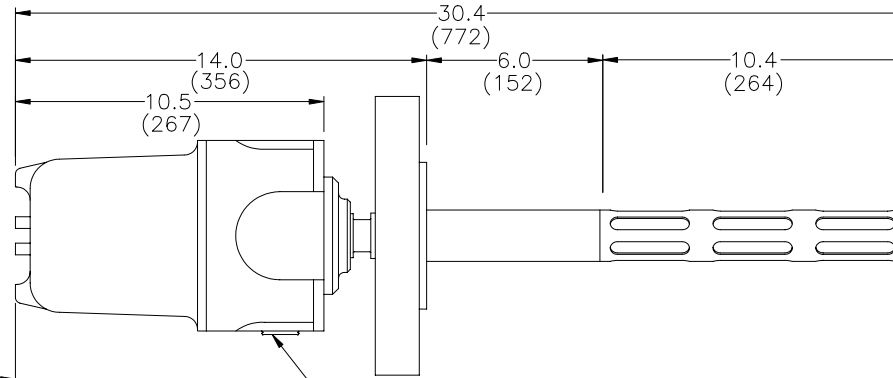
DWG NO. 0070-00193-000 REV B SH 1/1

REV	DATE	ECO	COMMENTS
A	06/04/02	156	CHANGED GROUND CAGE
B	06/04/03	169	ADD METRIC UNITS

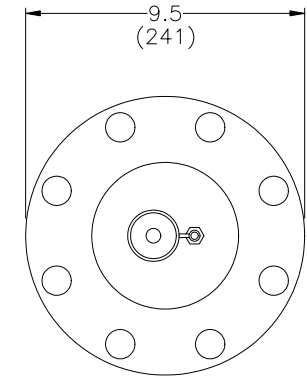


6.5 (165)
6.5 (165)

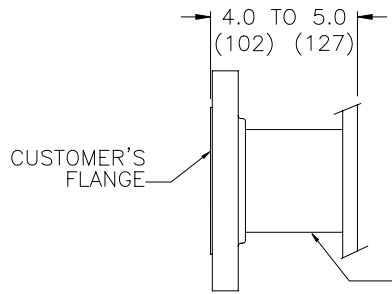
18 (457)
RECOMMENDED MINIMUM CLEARANCE FOR ACCESS



0.75-14 NPT REDUCING BUSHING (SUPPLIED)



9.5 (241)




CUSTOMER'S FLANGE

RECOMMENDED CUSTOMER INSTALLATION

SCHEDULE 40 OR SCHEDULE 80 PIPE

- NOTES:
- 1 FLANGE IS 3 INCH, 316L STAINLESS ANSI 900
 - 2 RECOMMEND CUSTOMER INSTALL FLANGE FROM 4.0 TO 5.0 INCHES FROM VESSEL INTERNAL WALL. (NOTE UNIT LENGTH)
 - 3 WEIGHT: 66 LBS (30kg)
 - 4 ALL DIMENSIONS GIVEN IN INCHES MILLIMETER DIMENSIONS SHOWN IN ()

 PHASE DYNAMICS, INC RICHARDSON, TEXAS	
TITLE INSTALLATION, 3" 900# INSERTION TYPE, 10 INCH CAGE	
SIZE B	DWG NO. 0070-00193-000
REV B	DATE 07/13/01
© PHASE DYNAMICS, INC.	